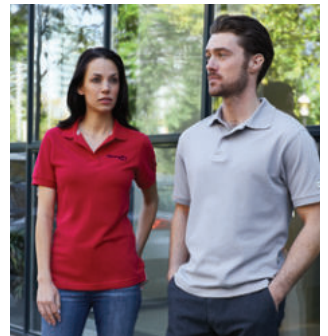


ENJOY

APPAREL 2020





**NEW FOR
2020!**





YOUR IDENTITY IS UNIQUE WE'LL PROVE IT

In a competitive world, you need something that makes your unique identity stand out. The more choice you have, the easier it is to find the perfect solution. With thousands of items, in all kinds of colours, waiting to be decorated just the way you want, we give you all the inspiration you need to

create outstanding promotional items.

Our superbly broad range gives you options for every purpose and every preference at every price point. Browse through and see what inspires you. And contact us for any further information or guidance you need.

THOROUGH SUSTAINABILITY

We strive to operate with sustainability in mind at all times. The products we sell are manufactured in a responsible and ethical fashion and abide by national regulatory requirement norms in each of our markets. These very norms allow our production experts to identify any issues early on in the development phase that might not comply with the aforementioned norms and hinder our sustainable production methods.

Product compliancy is also monitored throughout the entire production life cycle. We work hard to meet our customers' high expectations and transparency requirements for the European markets. Up-to-date regulations are made readily available during the production life cycle ensuring products are compliant down to the very last detail. All products are subject to compliancy reviews prior to and after launch at both our own testing facilities and at third party testing labs.

Our solid quality-control methods ensure that the products you'll choose for your brand can be sold and used with confidence.



GOVERNANCE



Sustainability is an ethical imperative that we follow at all corporate levels. In partnership with our supply chain, we aim at continuous social, ecological and economic improvement in the sourcing of our products, the products themselves, our logistics chain, and our own production and branding facilities.

PRODUCTS



The way we assure product responsibility adds extra value to our promotional products. We are continuously improving our Product Portal, e.g. with information on compliance with European REACH and RoHS chemical requirements, as well as voluntary sustainability standards such as OekoTex certification.



CUSTOMER



For the customers of promotional goods, sustainable branding becomes increasingly important. Their credibility builds on transparency, reliable sourcing and sustainability of both the production process and the promotional product itself.

In partnerships for progress with our vendors and through engagement in multi-stakeholder initiatives, we aim to build ethical global supply chains. Through our factory audit program, we work towards enhanced social standards, improved working conditions for factory workers as well as environmental risk mitigation.



SOURCING

amfori  **BSCI**
Trade with purpose

PRODUCTION



For our production facility and pan-European logistics center, environmental excellence is a win-win strategy. Its ISO 14001-certified environmental management aims at continuous improvement of environmental indicators. Long term investments are showing results, e.g. in the reduction of materials and energy consumption.



SUMMER FESTIVAL





38666 FENIKS 5 PANEL CAP



38028 HEROS SHORT SLEEVE UNISEX T-SHIRT



**EVERYTHING FOR A
DAY FULL OF FUN**

38663/38664
TRILBY
HAT + RIBBON





ELEVATE

38161
MANITOBA SHORT
SLEEVE WOMEN'S
OXFORD SHIRT

38160
MANITOBA
SHORT SLEEVE
MEN'S OXFORD
SHIRT

**BE PREPARED
FOR A DAY AT
THE OFFICE**

LET'S TALK
BUSINESS



ELEVATE

**GET YOUR
TRAINING
DONE!**



39011
NIAGARA
SHORT
SLEEVE
WOMEN'S
COOL
FIT T-SHIRT

**WORKOUT
TIME**

SUPERHEROES!

WHEN PRICE, STOCK AND FAST BRANDING COMBINE THEIR POWERS...

SUPERHEROES ARE CREATED!

SUPERHEROES CHANGE THE BRANDING STANDARD. ORDER YOUR MATCHING APPAREL WITH YOUR LOGO AND HAVE IT SHIPPED IN TWO DAYS.

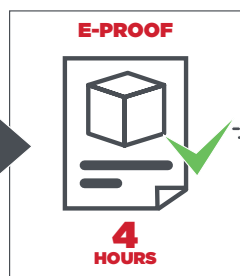
NO DELAY, NO HASSLE.

**TWO
DAY
BRANDING***

**HIGH
STOCK
LEVELS**

**COMPETITIVE
PRICING**

**MATCHING
COLOURS**



*All branding techniques are eligible for two-day branding (after E-proof approval) up to 250 pieces - except for Embroidery. For this technique and higher quantities, standard production lead time applies.

38106/38107

NEW

HELIOS

SHORT SLEEVE POLO

Interior custom branding options.
Tearaway-cutaway main label for tagless comfort. Two button placket (men's), Three button placket (women's). Flat knit rib collar. Necktape in contrast colour. Piqué knit of 100% Cotton. 180 g/m²



**Piqué knit of 90% Cotton and 10% Viscose.
***Piqué knit of 60% Cotton and 40% Polyester.

38100/38101

NEW

LIBERTY

SHORT SLEEVE POLO

Interior custom branding options.
Tearaway-cutaway main label for tagless comfort. Two button placket (men's), Three button placket (women's). Piqué knit of 100% Cotton. 160 g/m²



** Piqué knit of 95% Cotton and 5% Viscose
*** Piqué knit of 60% Cotton and 40% Polyester.

38028/38029

COMING SOON

HEROS

SHORT SLEEVE T-SHIRT

Interior custom branding options.
Tearaway-cutaway main label for tagless comfort. Tubular knit (men's), side seams (women's). Crew neck. Flat knit collar. Self-fabric necktape. Single Jersey knit of 100% Cotton. 150 g/m².



**Single Jersey knit of 90% Cotton and 10% Viscose.
***Single Jersey knit of 60% Cotton and 40% Polyester.

38323/38324

ORION

SOFTSHELL JACKET

Interior custom branding options. Tearaway-cutaway main label for tagless comfort. Inner placket. Hanger loop. Mechanical stretch woven of 100% Polyester bonded with 100% Polyester micro fleece. 250 g/m².



39433/39434

PALLAS

INSULATED BODYWARMER

Interior custom branding options.
Tearaway-cutaway main label for tagless comfort. Chest pocket with zipper closure. Elasticated binding. Inner stormflap with chin guard. Front pockets with zipper. Woven of 100% Nylon, 380T with cire finish. 38 g/m².



38666/38667 ♂

FENIKS

5 PANEL CAP

Embroidered eyelets for ventilation. Fabric hook and loop fastener. Head circumference: 58 cm (adults), 54 cm (kids). 100% Cotton twill. 175 g/m²



39337/39338

ATHENAS

INSULATED JACKET

Interior custom branding options.
Tearaway-cutaway main label for tagless comfort. Chest pocket with zipper closure. Elasticated binding. Inner stormflap with chin guard. Front pockets with zipper. Woven of 100% Nylon, 380T with cire finish. 38 g/m².



38676

BOREAS

BEANIE WITH PATCH

Single layer beanie with double folded edge. Patch for branding. 1x1 Rib knit of 100% Acrylic. Patch of 100% Polyester.



SO, WHAT IS NXT?



■
■
■
NXT
ELEVATE



NXT NXT NXT NXT NXT NXT NXT NXT NXT NXT NXT NXT NXT NXT NXT NXT NXT NXT



ELEVATE NXT

Elevate NXT is the next step in promotional apparel. With the garments of Elevate NXT we follow the supply chain to the source.

Made of recycled polyester or organic cotton, our Jade t-shirt and Beryl polo are truly sustainable.

And of course, they have all the qualities you have come to expect from an Elevate garment. Designed for branding and super comfortable to wear. Available in 5 popular promotional colours and our special Elevate NXT blue, this really is the next step in promotional apparel.

NXT NXT NXT NXT NXT NXT NXT NXT NXT NXT NXT NXT NXT NXT NXT NXT

ELEVATE



HEROS
38028
p. 18

SUPERHEROES



NANAIMO
38011 / 38012
p. 19



NIAGARA
39010 / 39011 / 39012
p. 0



AMERY
39025 / 39026
p. 0



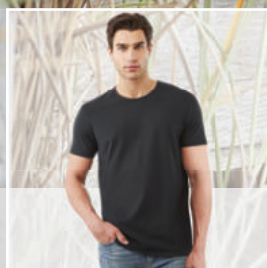
ELBERT
38026 / 38027
p. 0

LIFE



QUEBEC
39015 / 39016
p. 0

LIFE



BALFOUR
38024 / 38025
p. 0



KAWARTHA
38016 / 38017
p. 0



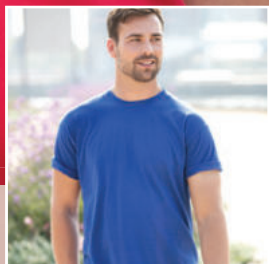
PONOKA
38018 / 38019
p. 0



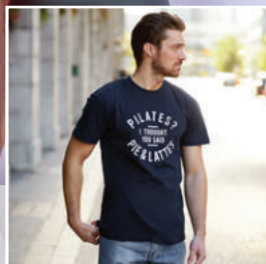
JADE NEW
37500 / 37501
p. 0

NXT

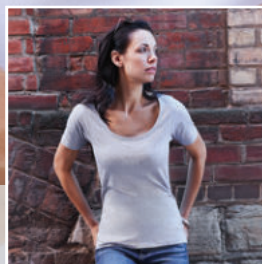
T-SHIRTS & ACTIVE TOPS



ACE
33S04 / 33S23
p. 0



RETURN ACE
33S06
p. 0



BOSEY
33021 / 33022
p. 0



GULLY
33023
p. 0

HOW TO BRAND YOUR T-SHIRT?

Want a look as unique as your brand? With so many different ways to amplify your identity, we'll help you create a piece with retail-quality branding.



INFUSION™

Infuses your logo into the fabric creating an untouchable decoration with razor sharp detail.

- Razor sharp with higher resolution
- Offers a comfortable, breathable decoration
- Untouchable • Offers unlimited colours for one set up



SCREENPRINT

Time-tested decoration method that enables vibrant and durable graphics on virtually any material.

- Economic choice for large multi-coloured decoration
- Great choice for a distressed look and feel
- Ideal technique for T-shirts

SUPERHEROES! 2 DAY BRANDING

The branding techniques eligible for two-day branding (after E-proof approval) on the SUPERHEROES styles are Screenprint and/or Digital Transfer up to 250 pieces. For other techniques and higher quantities, standard production lead time applies.



TRUE EDGE™ TRANSFER

This cutting-edge heat-transfer process produces remarkable clarity and precision.

- Allows for extreme detail like small text
 - Four-colour process or spot colour
 - Perfect for logos with many colours
- Alternative to embroidery for thin garments
 - Maintains integrity of waterproof fabrics





HEROS **SUPERHEROES! 2 DAY BRANDING**

short sleeve unisex t-shirt

Order # **38028** (XXS-XXXXXL)

Single Jersey knit of 100% Cotton.
150 g/m²

* Single Jersey knit of 90% Cotton and 10% Viscose

** Single Jersey knit of 60% Cotton and 40% Polyester.

01	10	21	23	24
25	33	40	44	49
51	60	68	69	70
89	90	94*	98**	99

INTERIOR CUSTOM
BRANDING OPTIONS

FLAT KNIT
RIB COLLAR

CREW NECK



I NANAIMO

short sleeve t-shirt

♂ **38011** (XS-XXXL) ♀ **38012** (XS-XXL)

Single Jersey knit of 100% ringspun combed Cotton.
160 g/m²

* Single Jersey knit of 90% Cotton and 10% Viscose.

SATIN SHOULDER
TO SHOULDER TAPE

CREW NECK

PICK-STITCH
DETAILS

01	05	10	21	23	24
25	33	38	40	44	49
51	60	68	69	70	86
90	95	96*	99		



I ACE

short sleeve t-shirt

♂ **33S04** (S-XXXL) ♀ **33S23** (S-XL)






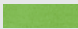
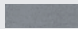

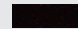
Single Jersey knit of 100% Cotton.
150 g/m²

* Single Jersey knit of 90% Cotton and 10% Viscose.

FLAT KNIT RIB COLLAR
WITH ELASTANE

CREW
NECK

SIDE SEAMS ♀

				
01	28	47	49	51
				
72	90	96*	99	





I RETURN ACE

short sleeve unisex t-shirt

33S06 (S-XXXL)

Single Jersey of 100% Cotton.
180-190 g/m²

* Single Jersey knit of 90% Cotton and 10% Viscose.



01	28	47	49
93	96*	99	



KAWARTHA

short sleeve organic v-neck t-shirt

♂ **38016** (XS-XXXL) ♀ **38017** (XS-XXL)

Single Jersey knit of 95% organic ringspun Cotton and 5% Elastane. 200 g/m²



01	25	33	38	44
49	95	96	99	



NXT
ELEVATE



| PONOKA

long sleeve organic t-shirt

♂ **38018** (XS-XXXL) ♀ **38019** (XS-XXL)



Single Jersey knit of 95% organic ringspun Cotton and 5% Elastane.
200 g/m²



| BALFOUR

short sleeve organic t-shirt

♂ **38024** (XS-XXXL) ♀ **38025** (XS-XXL)



Single Jersey knit of 95% organic ringspun Cotton and 5% Elastane.
200 g/m²





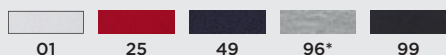
ELBERT

short sleeve pique t-shirt

♂ **38026** (XS-XXXL) ♂ **38027** (XS-XXL)

Piqué knit of 100% Cotton.
180 g/m²

* Piqué knit of 90% Cotton and 10% Viscose.





| BOSEY

short sleeve v-neck t-shirt

♂ **33021** (XS-XXXL) ♀ **33022** (XS-XXL)



Single Jersey knit of 100% Cotton.
150 g/m²

* Single Jersey knit of 90% Cotton and 10% Viscose.



| GULLY

short sleeve men's pocket t-shirt

♂ **33023** (XS-XXL)



Single Jersey of 100% Cotton.
150 g/m²

* Single Jersey knit of 90% Cotton and 10% Viscose.





| AMERY

short sleeve cool fit v-neck t-shirt

♂ **39025** (XS-XXXL) ♀ **39026** (XS-XXL)

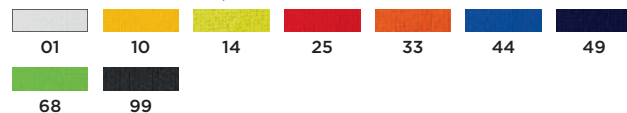


Mesh of 100% Polyester with Cool Fit finish.
145 g/m²

| NIAGARA

short sleeve cool fit t-shirt

♂ **39010** (XS-XXXL) ♀ **39011** (XS-XXL) ♂ **39012** (128-152)



Mesh of 100% Polyester with Cool Fit finish.
145 g/m²



QUEBEC

short sleeve cool fit t-shirt

♂ **39015** (XS-XXXL) ♀ **39016** (XS-XXL)

Mesh of 100% Polyester with Cool Fit finish.
145 g/m²



I JADE NEW

short sleeve recycled t-shirt

♂ **37500** (XS-XXXL) ♀ **37501** (XS-XXL)

Single Jersey of 100% recycled Polyester.
160 g/m²



ELEVATE



ELEVATE

SUPERHEROES



LIBERTY
38100 / 38101
p. 0



HELIOS NEW
38106 / 38107
p. 0

LIFE



CALGARY
38080 / 38081 / 38082
p. 0



OAKVILLE
38086 / 38087
p. 0



FAIRFIELD
38102 / 38103
p. 0



MARKHAM
38084 / 38085
p. 0

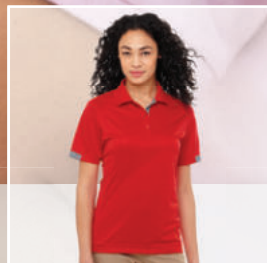
LIFE



ATKINSON
38104 / 38105
p. 0



OTTAWA
39082 / 39083
p. 0



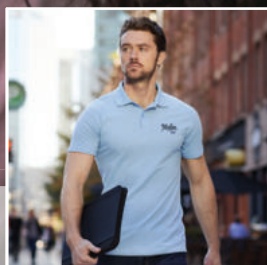
KISO
39084 / 39085
p. 0

NXT



BERYL NEW
37502 / 37503
p. 0

POLOS



ADVANTAGE

33098 / 33099

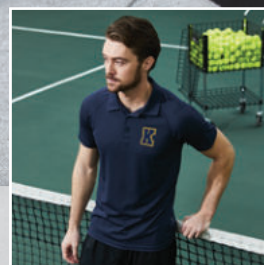
p. 0



LET

33102 / 33103

p. 0



GAME

33108 / 33109

p. 0



DEUCE

33104 / 33105

p. 0



FOREHAND

33S01 / 33S03

p. 0



HACKER

33096 / 33097

p. 0

Slazenger

Slazenger

HOW TO BRAND YOUR POLO?

BUILT FOR BRANDING

Of course you want a polo that's stylish and comfy. But ours are also designed to offer unique locations for your logo.



EMBROIDERY

With thread colours to match any logo, embroidery is always a popular choice.

- Classic look
- Up to 12 colours per embroidery
- Perfect for left/right chest and left/right bicep



SCREENPRINT

Time-tested decoration method that enables vibrant and durable graphics on virtually any material.

- Economic choice for large multi-coloured decoration
- Great choice for a distressed look and feel
- Ideal technique for T-shirts

SUPERHEROES! 2 DAY BRANDING

The branding techniques eligible for two-day branding (after E-proof approval) on the SUPERHEROES styles are Screenprint and/or Digital Transfer up to 250 pieces. For other techniques and higher quantities, standard production lead time applies.



TRUE EDGE™ TRANSFER

This cutting-edge heat-transfer process produces remarkable clarity and precision.

- Allows for extreme detail like small text
- Four-colour process or spot colour
- Perfect for logos with many colours
- Alternative to embroidery for thin garments
- Maintains integrity of waterproof fabrics

LIBERTY

**SUPERHEROES!
2 DAY BRANDING**

short sleeve polo

♂ **38100** (XS-XXXL) ♀ **38101** (XS-XXL)

Piqué knit of 100% Cotton.

160 g/m²

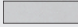




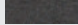

* Piqué knit of 95% Cotton and 5% Viscose

** Piqué knit of 60% Cotton and 40% Polyester.

INTERIOR CUSTOM
BRANDING OPTIONS

TWO BUTTON
PLACKET

THREE BUTTON
PLACKET

			
01	25	44	49
			
94*	98**	99	



ELEVATE



HELIOS

SUPERHEROES! 2 DAY BRANDING

NEW

short sleeve polo

♂ **38106** (XS-XXXXXL) ♀ **38107** (XS-XXXXL)

Piqué knit of 100% Cotton.

180 g/m²

*Piqué knit of 90% Cotton and 10% Viscose

**Piqué knit of 60% Cotton and 40% Polyester

INTERIOR CUSTOM
BRANDING
OPTIONS

TWO BUTTON
PLACKET

THREE BUTTON
PLACKET

01	10	21	23	24
25	33	40	44	49
51	60	68	69	70
89	90	94*	98**	99





I ADVANTAGE

short sleeve polo

♂ **33098** (S-XXXL) ♀ **33099** (S-XXL)

Piqué knit of 100% Cotton.
160 g/m²

* Piqué knit of 85% Cotton and 15% Viscose.



01	21	25	33	40	42
47	49	68	90	95*	99



I FOREHAND

short sleeve polo

♂ **33S01** (S-XXXL) ♀ **33S03** (S-XL)

Piqué knit of 100% combed Cotton.
200- 220 g/m²

* Piqué knit of 90% Cotton and 10% Viscose.

HERRINGBONE
IMPRINTED NECKTAPE

TWO BUTTON
PLACKET

SIDE SLITS

FLAGLABEL
AT SIDE SEAM

01	28	40	47	49
51	72	90	96*	99



I CALGARY

short sleeve polo

♂ **38080** (XS-XXXL)

♀ **38081** (XS-XXL)

♂ **38082** (104-152)

Piqué knit of 100% Cotton.
200 g/m²

* Piqué knit of 90% Cotton and 10% Viscose.

THREE BUTTON
PLACKET

TWO BUTTON
PLACKET

PICK-STITCH
DETAILS

SIDE SLITS WITH SATIN
TAPE FINISHING

01	05	10	21	23	24	25
33	38	40	44	49	51	60
68	69	70	90	95	96*	99




ELEVATE



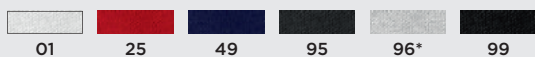
OAKVILLE

long sleeve polo

♂ **38086** (XS-XXXL) ♀ **38087** (XS-XXL)

Piqué knit of 100% Cotton.
200 g/m²

* Piqué knit of 90% Cotton and 10% Viscose.



FAIRFIELD

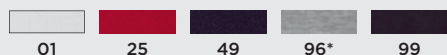
short sleeve polo with tipping

♂ **38102** (XS-XXXL) ♀ **38103** (XS-XXL)

Piqué knit of 100% Cotton.

180 g/m²

* Piqué knit of 90% Cotton and 10% Viscose.





I DEUCE

short sleeve polo with tipping

♂ **33104** (S-XXXL) ♀ **33105** (S-XXL)

Piqué knit of 100% combed Cotton.
180 g/m²



I HACKER

short sleeve polo

♂ **33096** (S-XXXL) ♀ **33097** (S-XXL)

Piqué knit of 100% Cotton.
220 g/m²



01	25	26	33	42
49	50	90	91	99





I LET

short sleeve jersey polo

♂ **33102** (S-XXXL) ♀ **33103** (S-XXL)

Single Jersey of 100% Cotton.
180 g/m²





BERYL NEW

short sleeve organic recycled polo

♂ **37502** (XS-XXXL) ♀ **37503** (XS-XXL)

Piqué knit of 70% organic Cotton and 30% recycled Polyester.
220 g/m²

SUSTAINABLE
PROMOTIONAL
APPAREL

TWO BUTTON
PLACKET

THREE BUTTON
PLACKET

SUSTAINABLE
METAL BUTTONS

FLAT KNIT
RIB CUFFS





MARKHAM

short sleeve stretch polo

♂ **38084** (XS-XXXL) ♀ **38085** (XS-XXL)

Double Piqué knit of 95% Cotton and 5% Elastane.
200 g/m²

* Double Piqué knit of 85% Cotton, 10% Viscose and 5% Elastane.



01	25	40	49
95	96 *	99	



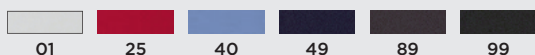


ATKINSON

short sleeve button-down polo

♂ **38104** (XS-XXXL) ♀ **38105** (XS-XXL)

Double Piqué knit of 95% Cotton and 5% Elastane.
200 g/m²



I GAME

short sleeve cool fit polo

♂ **33108** (S-XXXL) ♀ **33109** (S-XXL)

Mesh of 100% Polyester with Cool Fit finish.
125 g/m²





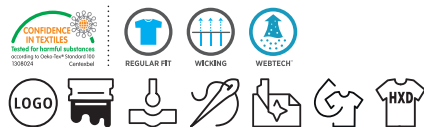
OTTAWA

short sleeve cool fit polo

♂ **39082** (XS-XXXXL) ♀ **39083** (XS-XXL)

01	25	33	44
49	60	68	99

Piqué of 100% Polyester with Cool Fit finish.
220 g/m²



KISO

short sleeve cool fit polo

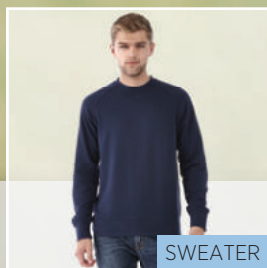
♂ **39084** (XS-XXL) ♀ **39085** (XS-XL)

01	25	44	49	92	99
----	----	----	----	----	----

Textured knit of 100% micro
Polyester with Cool Fit finish.
150 g/m²



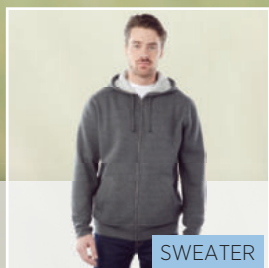
ELEVATE



SWEATER

KRUGER

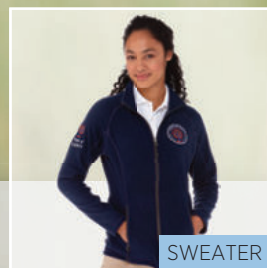
38224
p. 0



SWEATER

CYPRESS

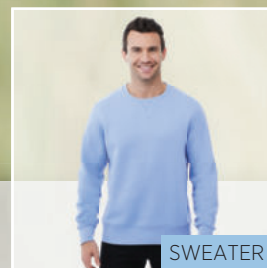
38223
p. 0



SWEATER

RIXFORD

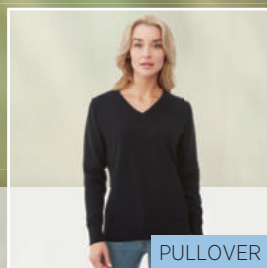
39496 / 39497
p. 0



SWEATER

SURREY

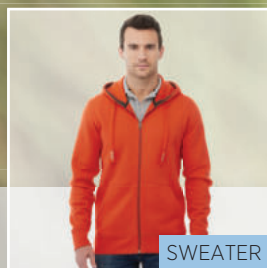
38210
p. 0



PULLOVER

SPRUCE

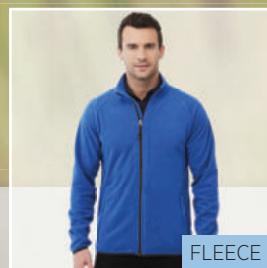
38217 / 38218
p. 0



SWEATER

ARORA

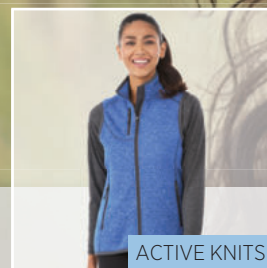
38211 / 38212 / 38213
p. 0



FLEECE

BROSSARD

39482 / 39483
p. 0



ACTIVE KNITS

FONTAINE

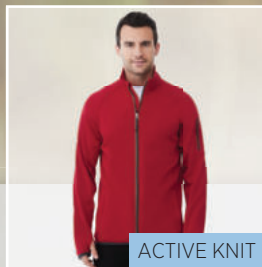
39427 / 39428
p. 0



ACTIVE KNIT

TREMBLANT

39492 / 39493
p. 0

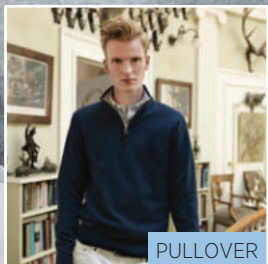


ACTIVE KNIT

MANI

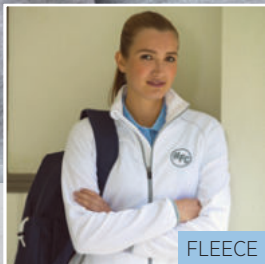
39480 / 39481
p. 0

FLEECE & KNITS



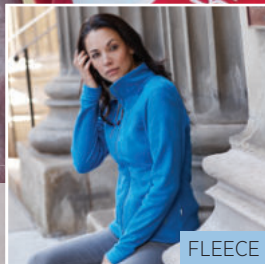
PULLOVER

SET
33229
p. 0



FLEECE

DROP SHOT
33486 / 33487
p. 0



FLEECE

PITCH
33488 / 33489
p. 0



FLEECE

VARSITY
33231
p. 0



HOW TO BRAND YOUR SWEATER?

Our apparel's designed to showcase your brand in a whole new way, with unique imprint locations on both the outside and the inside of the garments.



EMBROIDERY

With thread colours to match any logo, embroidery is always a popular choice.

- Classic look
- Up to 12 colours per embroidery
- Perfect for left/right chest and left/right bicep



SCREENPRINT

Time-tested decoration method that enables vibrant and durable graphics on virtually any material.

- Economic choice for large multi-coloured decoration
- Great choice for a distressed look and feel
- Ideal technique for T-shirts



TRUE EDGE™ TRANSFER

This cutting-edge heat-transfer process produces remarkable clarity and precision.

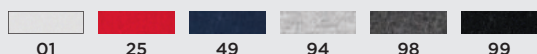
- Allows for extreme detail like small text
- Four-colour process or spot colour
- Perfect for logos with many colours
- Alternative to embroidery for thin garments
- Maintains integrity of waterproof fabrics

KRUGER

unisex crewneck sweater

38224 (XXS-XXXL)

Knit of 52% Cotton and 48% Polyester.
240 g/m²



INTERIOR CUSTOM
BRANDING OPTIONS



CREW NECK



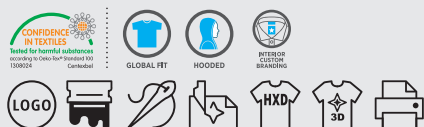
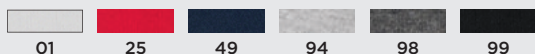
FLAT KNIT RIB
BOTTOM HEM

CYPRESS

unisex full zip hoodie

38223 (XXS-XXXL)

Knit of 52% Cotton and 48% Polyester.
240 g/m²



DRAWSTRING
IN HOOD

INTERIOR CUSTOM
BRANDING OPTIONS



KANGAROO
POCKET



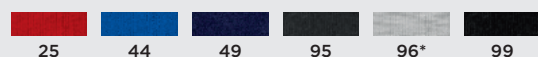
| SURREY

unisex crewneck sweater

38210 (XXS-XXXL)

Knit of 80% Cotton and 20% Polyester,
brushed on the inside.
300 g/m²

* Knit of 82% Cotton, 10% Viscose and 8% Polyester. Brushed on the inside.




ELEVATE





IARORA

full zip hoodie

♂ **38211** (XS-XXXL)

♀ **38212** (XS-XXL)

ò **38213** (104-152)

Knit of 80% Cotton and 20% Polyester,
brushed on the inside.

300 g/m²

* Knit of 82% Cotton, 10% Viscose and 8% Polyester. Brushed on the inside.



01	25	33	44
49	95	96*	99





IRIXFORD

full zip fleece jacket


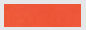



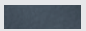
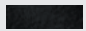
♂ **39496** (XS-XXL) ♀ **39497** (XS-XL)

Micro fleece of 100% Polyester, 2 sides brushed, 1 side anti-pilling.
180 g/m²

FRONT POCKETS WITH
REVERSED COIL ZIPPER
IN CONTRAST COLOUR

EASY GRIP
ZIPPER PULLERS



			
25	33	47	49
			
68	89	99	



BROSSARD

fleece full zip jacket

♂ **39482** (XS-XXXL) ♀ **39483** (XS-XXL)

Micro fleece of 100% Polyester, 2 sides brushed and 1 side anti-pilling.
190 g/m²

INNER STORMFLAP
WITH CHIN GUARD

FRONT POCKETS
WITH ZIPPER

ELASTICATED BINDING
IN CONTRAST COLOUR

THUMB
HOLES

01	25	33	44	49
68	90	95	99	



IDROP SHOT

full zip fleece jacket

♂ **33486** (XS-XXXL) ♀ **33487** (S-XXL)

Micro fleece of 100% Polyester, 2 sides brushed, 1 side anti-pilling.
190 g/m²

FRONT POCKETS
WITH ZIPPER

CHIN GUARD

SLEEVE POCKET
WITH ZIPPER

ELASTICATED
BINDING



Slazenger

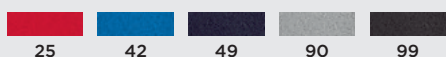


I PITCH

full zip fleece jacket

♂ **33488** (XS-XXXL) ♀ **33489** (XS-XXL)

Microfleece of 100% Polyester.
200 g/m²





| TREMBLANT

knit jacket

♂ **39492** (XS-XXL) ♀ **39493** (XS-XL)



100% Polyester brushed back sweater knit.
305 g/m²



| FONTAINE

knit bodywarmer

♂ **39427** (XS-XXL) ♀ **39428** (XS-XL)



100% Polyester brushed back sweater knit.
305 g/m²



I MANI

performance full zip fleece jacket

♂ **39480** (XS-XXXL) ♀ **39481** (XS-XXL)

Jersey knit of 91% Polyester and 9% Elastane with Cool Fit finish. Brushed on the inside.
245 g/m²

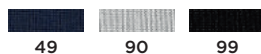




I SET

unisex quarter zip pullover

33229 (S-XXXL)



Flat knit of 100% Cotton. 12 Gauge.



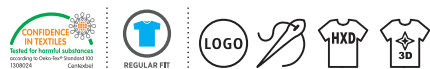
I SPRUCE

v-neck pullover

♂ **38217** (XS-XXXL) ♀ **38218** (XS-XXL)



Flat knit of 60% Cotton and 40% Polyester. 12 gauge.

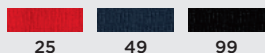


I VARSITY

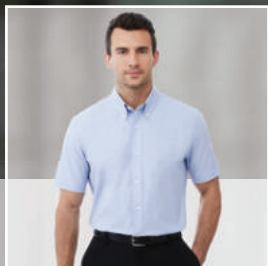
unisex college jacket

33231 (XS-XXL)

French Terry knit of 100% Cotton.
420 g/m²



■
■
■
ELEVATE



MANITOBA

38160 / 38161

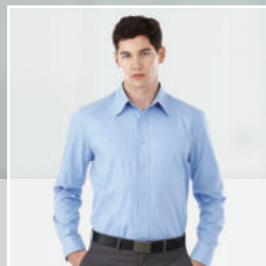
p. 0



VAILLANT

38162 / 38163

p. 0



HAMELL

38168 / 38169

p. 0



BIGELOW

38176 / 38177

p. 0

LIFE





SHIRTS

ENJOY 2020 APPAREL

HOW TO BRAND YOUR SHIRT?

Take a great style and make it your own with one of our unique decoration methods. Whether you want to keep it simple or are looking for something bolder, we'll help you create the right look with a method and imprint location that work for your brand.



SCREENPRINT

Time-tested decoration method that enables vibrant and durable graphics on virtually any material.

- Economic choice for large multi-coloured decoration
- Great choice for a distressed look and feel
- Ideal technique for T-shirts



TRUE EDGE™ TRANSFER

This cutting-edge heat-transfer process produces remarkable clarity and precision.

- Allows for extreme detail like small text
- Four-colour process or spot colour
- Perfect for logos with many colours
- Alternative to embroidery for thin garments
- Maintains integrity of waterproof fabrics



EMBROIDERY

With thread colours to match any logo, embroidery is always a popular choice.

- Classic look
- Up to 12 colours per embroidery
- Perfect for left/right chest and left/right bicep

MANITOBA

short sleeve oxford shirt

♂ **38160** (XS-XXXL) ♀ **38161** (XS-XXL)

Oxford of 100% Cotton. 40x32/2, 110x50.
142 g/m²





IVAILLANT

long sleeve oxford shirt

♂ **38162** (XS-XXXL) ♀ **38163** (XS-XXL)

Oxford of 100% Cotton. 40x32/2, 110x50.
142 g/m²

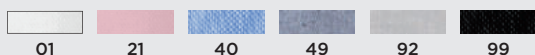
ENGRAVED
PEARL BUTTONS

BUTTON-DOWN
COLLAR

SECOND BUTTONHOLE
FROM THE BOTTOM WITH
ORANGE STITCHING



ADJUSTABLE
CUFF WITH
SINGLE PLEAT



I HAMELL

long sleeve stretch shirt

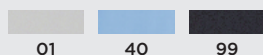
♂ **38168** (XS-XXXL) ♀ **38169** (XS-XXL)

Poplin of 96% Cotton and 4% Elastane. 50x50+40D, 170x72.
118 g/m²

HIDDEN BUTTON-DOWN COLLAR

DYED-TO-MATCH ENGRAVED BUTTONS

ADJUSTABLE CUFF WITH SINGLE PLEAT





I BIGELOW

long sleeve pique shirt

♂ **38176** (XS-XXXL) ♀ **38177** (XS-XXL)

Double Piqué knit of 95% Cotton and 5% Elastane.
200 g/m²

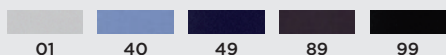
DYED-TO-MATCH
ENGRAVED BUTTONS

SELF-FABRIC
COLLAR

BUTTON-DOWN
COLLAR



ADJUSTABLE
CUFF WITH
SINGLE PLEAT



ELEVATE



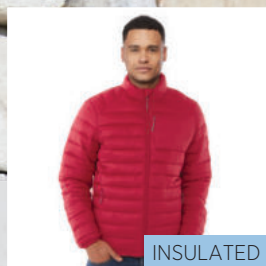
SOFTSHELL

ORION NEW
38323 / 38324
p. 0



INSULATED

PALLAS NEW
39433 / 39434
p. 0



INSULATED

ATHENAS NEW
39337 / 39338
p. 0



SOFTSHELL

KARMINE
38321 / 38322
p. 0



SOFTSHELL

STINSON
39429 / 39430
p. 0



SOFTSHELL

MAXSON
38319 / 38320
p. 0



LIGHTWEIGHT

FLINT
38317 / 38318
p. 0



SOFTSHELL

LANGLEY
39311 / 39312
p. 0



INSULATED

BANFF
39331 / 39332
p. 0



INSULATED

FAIRVIEW
39420 / 39421
p. 0



INSULATED

SCOTIA
39305 / 39306
p. 0



INSULATED

JUNCTION
39431 / 39432
p. 0



INSULATED

SILVERTON
39333 / 39334
p. 0

SUPERHEROES

LIFE

LIFE

LIFE

JACKETS

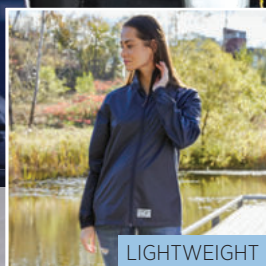


LIGHTWEIGHT

TOP SPIN

33336 / 33337

p. 0



LIGHTWEIGHT

ACTION

33335

p. 0



SOFTSHELL

MATCH

33306 / 33307

p. 0



SOFTSHELL

CHUCK

33346 / 33347

p. 0



INSULATED

GRAVEL

33429 / 33430

p. 0

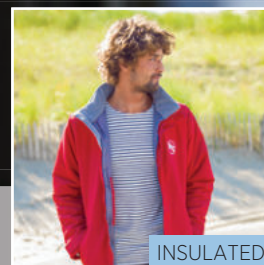


INSULATED

MIXED DOUBLES

33425 / 33426

p. 0

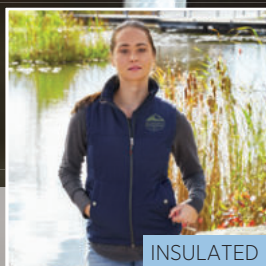


INSULATED

UNDER SPIN

33340 / 33341

p. 0

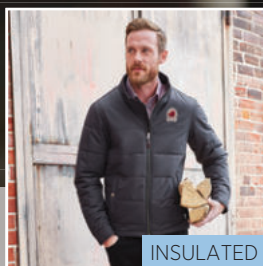


INSULATED

SWING

33431 / 33432

p. 0



INSULATED

BOUNCER

33344 / 33345

p. 0



INSULATED

HUTCH

33348 / 33349

p. 0

HOW TO BRAND YOUR JACKET?

STANDARD LOCATIONS IN PLACES YOU'D NEVER EXPECT

Nobody offers more standard imprint locations – front, back, hip, shoulders, sleeves and even inside. By mixing and matching, you can create and transform the garment into a truly unique piece that sets your brand apart



EMBROIDERY

With thread colours to match any logo, embroidery is always a popular choice.

- Classic look
- Up to 12 colours per embroidery
- Perfect for left/right chest and left/right bicep



TRUE EDGE™ TRANSFER

This cutting-edge heat-transfer process produces remarkable clarity and precision.

- Allows for extreme detail like small text
- Four-colour process or spot colour
- Perfect for logos with many colours
- Alternative to embroidery for thin garments
- Maintains integrity of waterproof fabrics

SUPERHEROES! 2 DAY BRANDING

The branding techniques eligible for two-day branding (after E-proof approval) on the SUPERHEROES styles are Screenprint and/or Digital Transfer up to 250 pieces. For other techniques and higher quantities, standard production lead time applies.



LASER ENGRAVING

Laser can be applied at virtually any location.

- Smooth, glossy finish
- Unlimited washability
- Best on mid-range colours



DEBOSS

Deboss creates a subtle tone-on-tone look with a dye that's heat-pressed into the material.

- Ideal for waterproof fabrics
- Striking 3D appearance
- Apply to almost any location
- Unlimited washability





I ACTION

unisex packable jacket

♂ **33335** (S-XXXL)



Fabric of 100% Polyester with AC milky coating.
64 g/m²



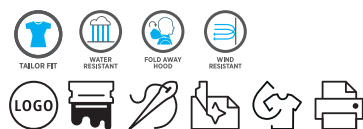
I TOP SPIN

lightweight jacket

♂ **33336** (S-XXXL) ♀ **33337** (S-XXL)



Taslon of 100% Polyester with AC coating.
Lining of 100% Polyester Taffeta.
107 g/m²



FLINT

lightweight jacket

♂ **38317** (XS-XXL) ♀ **38318** (XS-XL)

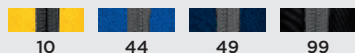
240T of 100% Polyester with water resistant coating and water repellent finish.
80 g/m²

600 MM WATER RESISTANT

ROLL-AWAY HOOD

CHEST POCKET WITH ZIPPER CLOSURE

ELASTICATED CUFFS





ORION

SUPERHEROES! 2 DAY BRANDING

NEW

softshell jacket

♂ **38323** (XS-XXXL) ♀ **38324** (XS-XXL)

Mechanical stretch woven of 100% Polyester bonded with 100% Polyester micro fleece. 250 g/m²

INTERIOR CUSTOM BRANDING OPTIONS

CHEST POCKET WITH ZIPPER CLOSURE



FRONT POCKETS



KARMINE

softshell jacket

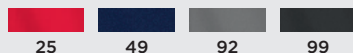
♂ **38321** (XS-XXL) ♀ **38322** (XS-XL)

Mechanical stretch woven of 100% Polyester bonded to 100% Polyester interlock knit with waterproof, breathable membrane and water-repellent finish. 210 g/m²

INTERIOR CUSTOM
BRANDING OPTIONS

5000 MM
WATERPROOF
AND 400 G/M²
BREATHABLE

FRONT
POCKETS




ELEVATE



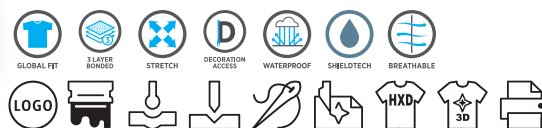
| STINSON

softshell bodywarmer

♂ **39429** (XS-XXL) ♀ **39430** (XS-XL)

		
49	89	99







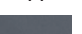

Mechanical stretch woven of 100% Polyester bonded to microfleece of 100% Polyester with waterproof, breathable membrane and water repellent finish. 270 g/m²



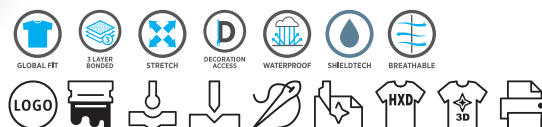
| MAXSON

softshell jacket

♂ **38319** (XS-XXL) ♀ **38320** (XS-XL)

			
25	33	44	47
			
49	69	89	99

Mechanical stretch woven of 100% Polyester bonded to micro fleece of 100% Polyester with waterproof, breathable membrane and water repellent finish. 270 g/m²



I LANGLEY

softshell jacket

♂ **39311** (XS-XXXL) ♀ **39312** (XS-XXL)

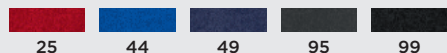
Woven fabric of 90% Polyester and 10% Elastane bonded with 100% Polyester micro fleece. 300 g/m²

5000 MM WATERPROOF AND 3000 G/M² BREATHABLE

DETACHABLE HOOD

FRONT POCKETS WITH ZIPPER

ADJUSTABLE CUFFS WITH VELCRO CLOSURE



ELEVATE



| MATCH

softshell jacket

♂ **33306** (S-XXXL) ♀ **33307** (S-XXL)



Single Jersey knit of 100% Polyester bonded with 100% Polyester micro fleece.
360 g/m²



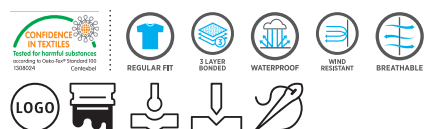
| CHUCK

softshell jacket

♂ **33346** (XS-XXL) ♀ **33347** (XS-XL)



Single Jersey knit of 100% Polyester bonded with 100% Polyester micro fleece.
360 g/m²



PALLAS

SUPERHEROES!
2 DAY BRANDING

NEW

insulated bodywarmer

♂ **39433** (XS-XXXL) ♀ **39434** (XS-XXL)

Woven of 100% Nylon, 380T with cire finish
38 g/m²

INNER STORMFLAP
WITH CHIN GUARD

INTERIOR CUSTOM
BRANDING OPTIONS

CHEST POCKET WITH
ZIPPER CLOSURE

FRONT POCKETS
WITH ZIPPER



ELEVATE





I ATHENAS

**SUPERHEROES!
2 DAY BRANDING**

NEW

insulated jacket

♂ **39337** (XS-XXXL) ♀ **39338** (XS-XXL)

Woven of 100% Nylon, 380T with cire finish
38 g/m²

INNER STORMFLAP
WITH CHIN GUARD

INTERIOR CUSTOM
BRANDING OPTIONS

CHEST POCKET WITH
ZIPPER CLOSURE

FRONT POCKETS
WITH ZIPPER



ELEVATE





ECHOHEAT™
THERMAL
REFLECTIVE
TECHNOLOGY

INTERIOR MEDIA EXIT
PORT WITH CORD GUIDE

PACKABLE IN TO
LOWER LEFT POCKET

SILVERTON

insulated packable jacket

♂ 39333 (XS-XXL) ♀ 39334 (XS-XL)



100% Nylon dull cire 380T woven, water repellent and downproof. 100% Polyester faux down filling. 38 g/m²



JUNCTION

insulated bodywarmer

♂ 39431 (XS-XXL) ♀ 39432 (XS-XL)



100% Nylon dull cire 380T woven, water repellent and downproof. 100% Polyester faux down filling. 38 g/m²



I UNDER SPIN

insulated jacket

♂ **33340** (S-XXXL) ♀ **33341** (S-XXL)

Taslon of 100% Polyester with AC coating. Lining of 100% Polyester quilted Taffeta. Padding 100% Polyester. 107 g/m²





I GRAVEL

insulated bodywarmer

♂ **33429** (S-XXXL) ♀ **33430** (S-XXL)

Taslon of 100% Polyester with AC coating.

Lining of 100% Polyester taffeta.

107 g/m²

INNER STORMFLAP
WITH CHIN GUARD

DETACHABLE
HOOD

FRONT POCKETS



I MIXED DOUBLES

insulated bodywarmer

♂ **33425** (S-XXXL) ♀ **33426** (S-XXL)

Diamond check fabric of 100% Nylon with AC white coating.
48 g/m²

SINGLE JERSEY LINING
IN CONTRAST COLOUR

DETACHABLE HOOD

ELASTIC DRAWSTRING WITH
ADJUSTABLE CORD LOCK

FRONT POCKETS





I BOUNCER

insulated jacket

♂ **33344** (XS-XXL) ♀ **33345** (XS-XL)



Dobby woven of 100% Polyester
with waterproof finish.
105 g/m²



I SWING

insulated bodywarmer

♂ **33431** (XS-XXL) ♀ **33432** (XS-XL)



Dobby woven of 100% Polyester
with waterproof finish.
105 g/m²





IBANFF

hybrid insulated jacket

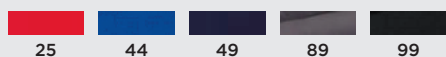
♂ **39331** (XS-XXL) ♀ **39332** (XS-XL)

100% Nylon dull cire 380T woven, water repellent and downproof. Contrast fabric: 96% Polyester, 4% Elastane with water repellent finish. 38 g/m²

INNER STORMFLAP WITH CHIN GUARD

REFLECTIVE DETAILS

DROPPED BACK HEM



I HUTCH

hybrid insulated jacket

♂ **33348** (XS-XXL) ♀ **33349** (XS-XL)

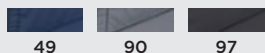
100% Nylon full dull cire, 380T woven, with PA coating and water repellent finish. Contrast fabric: 100% Polyester knit with brushed back. 35 g/m²

ELASTIC DRAWSTRING
WITH ADJUSTABLE
CORD LOCK

CHIN GUARD

QUILTED BODY AND
KNITTED CONTRAST FABRIC

FRONT POCKETS
WITH ZIPPER



FAIRVIEW

lightweight down bodywarmer

♂ **39420** (XS-XXXL) ♀ **39421** (XS-XXL)

Woven of 100% Nylon with dull cire water repellent coating, 20D. 90% Down and 10% Feathers. 115 g.

CHEST POCKET WITH ZIPPER CLOSURE

FRONT POCKETS WITH ZIPPER

INNER STORMFLAP WITH CHIN GUARD

ELASTICATED BINDING



25	33	44	49
92	95	99	



ELEVATE





SCOTIA

lightweight down jacket

♂ **39305** (XS-XXXL) ♀ **39306** (XS-XXL)

Woven of 100% Nylon with dull cire water repellent coating, 20D. 90% Down and 10% Feathers. 115 g.

INNER STORMFLAP
WITH CHIN GUARD

SLEEVE POCKET
WITH ZIPPER

CHEST POCKET WITH
ZIPPER CLOSURE

FRONT POCKETS
WITH ZIPPER



25	33	44	49
92	95	99	





BRYSON

38654
p. 0



BRENT

38656
p. 0



MOMENTUM

111052
p. 0



MIGHTY

38661
p. 0



CALIBER

111055
p. 0



REDWOOD

111056
p. 0



LEVEL

111053
p. 0



MARK

111054
p. 0



CHALLENGE

111002 / 195488
p. 0



QUALIFIER

111011
p. 0



ALLEY

111021
p. 0



FENIKS NEW

38666
p. 0



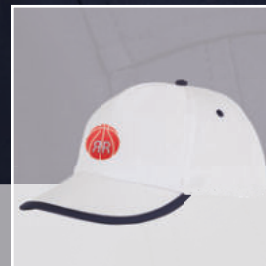
FENIKS KIDS NEW

38667
p. 0



STYX NEW

38668
p. 0



NESTOR NEW

38669
p. 0

ELEVATE

ELEVATE

Slazenger

bullet

HEADWEAR & ACCESSORIES

bullet

bullet

bullet

bullet



ICARUS NEW

38670
p. 0



HADES NEW

38673
p. 0



CETO NEW

38674
p. 0



ARES NEW

38675
p. 0



SOLARIS NEW

38662
p. 0



SOLARIS KIDS NEW

38672
p. 0



HERA NEW

38671
p. 0



TRUCKER

111069
p. 0



BASEBALL

38658
p. 0



SAN DIEGO

111012
p. 0



ELENA

38660
p. 0



LUCINA

38659
p. 0



TRILBY

38663 / 38664
p. 0



BOREAS NEW

38676
p. 0



IRWIN

111043
p. 0



COLUMBUS

111060
p. 0

HOW TO BRAND YOUR HEADWEAR?

We don't just put a lot of thought into how a garment looks. We also design it to give you plenty of options for branding, allowing you to create the perfect look.



EMBROIDERY

With thread colours to match any logo, embroidery is always a popular choice.

- Classic look
- Up to 12 colours per embroidery
- Perfect for left/right chest and left/right bicep



DEBOSS

Deboss creates a subtle tone-on-tone look with a dye that's heat-pressed into the material.

- Ideal for waterproof fabrics
- Striking 3D appearance
- Apply to almost any location
- Unlimited washability



TRUE EDGE™ TRANSFER

This cutting-edge heat-transfer process produces remarkable clarity and precision.

- Allows for extreme detail like small text
- Four-colour process or spot colour
- Perfect for logos with many colours
- Alternative to embroidery for thin garments
- Maintains integrity of waterproof fabrics

SUPERHEROES! 2 DAY BRANDING

The branding techniques eligible for two-day branding (after E-proof approval) on the SUPERHEROES styles are Screenprint and/or Digital Transfer up to 250 pieces. For other techniques and higher quantities, standard production lead time applies.



HXD

A unique decoration method that brings an added dimension to your logo, by creating a subtle pop from the apparel surface.

- Unique decoration method
- Add dimension to a logo
- Perceived value of Embroidery combined with colour range and detail of True Edge Transfer
- Durable
- Available for a wide range of garments
- Max print area: 100 x 75 mm

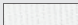




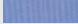








FENIKS 38666 SUPERHEROES! 2 DAY BRANDING

NEW **bullet**

5 panel cap

100% Cotton twill. 175 g/m²
Embroidered eyelets for ventilation
Fabric hook and loop fastener
Head circumference: 58 cm

		
38666010	38666100	38666210
		
38666250	38666330	38666400
		
38666440	38666490	38666580
		
38666690	38666890	38666990










FENIKS 38667 SUPERHEROES! 2 DAY BRANDING

NEW **bullet**

kids 5 panel cap

100% Cotton twill. 175 g/m²
Embroidered eyelets for ventilation
Fabric hook and loop fastener
Head circumference: 54 cm

			
38667010	38667100	38667210	38667250
			
38667330	38667440	38667680	38667990



STYX 38668 NEW**5 panel sandwich cap**100% Cotton twill. 175 g/m²

Pre-curved visor with sandwich

Embroidered eyelets for ventilation

Fabric hook and loop fastener

Head circumference: 58 cm



38668210 38668250 38668330 38668400



38668440 38668490 38668890 38668990

bullet®

**NESTOR** 38669 NEW**5 panel cap with piping**100% Cotton twill. 175 g/m²

Piping details

Embroidered eyelets for ventilation

Fabric hook and loop fastener

Head circumference: 58 cm.



38669010 38669250 38669330 38669440



38669490 38669990

bullet®

**ICARUS** 38670 NEW**5 panel duotone cap**100% Cotton twill. 175 g/m²

Pre-curved visor in contrast colour

Embroidered eyelets in contrast

colour for ventilation

Fabric hook and loop fastener

Head circumference: 58 cm



38670100 38670210 38670250 38670330



38670440 38670990

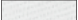






bullet®



| SOLARIS 38662 NEW

sun hat

100% Cotton twill. 175 g/m²
Head circumference: 58 cm.

			
38662010	38662100	38662210	38662250
			
38662330	38662440	38662490	38662990



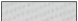





bullet®



| SOLARIS 38672 NEW

kids sun hat

100% Cotton twill. 175 g/m²
Head circumference: 54 cm.

			
38672010	38672100	38672250	38672330
			
38672440	38672680		



bullet®



| HERA 38671 NEW

sun visor

100% Cotton twill. 175 g/m²
Fabric hook and loop fastener
Head circumference: 58 cm.

			
38671010	38671210	38671250	38671330
			
38671440	38671490	38671990	



bullet®



| HADES 38673 NEW

5 panel cap

100% Cotton twill. 175 g/m²
 Embroidered eyelets for ventilation
 Fabric hook and loop fastener
 Structured front panel
 Cotton inside details
 Head circumference: 58 cm.

			
38673010	38673250	38673330	38673440
			
38673490	38673690	38673890	38673990











bullet®



| CETO 38674 NEW

5 panel sandwich cap

100% Cotton twill. 175 g/m²
 Pre-curved visor with sandwich
 Embroidered eyelets for ventilation
 Fabric hook and loop fastener
 Structured front panel
 Cotton inside details
 Head circumference: 58 cm.

			
38674210	38674250	38674330	38674400
			
38674440	38674490	38674890	38674990



bullet®



| ARES 38675 NEW

6 panel cap

100% Cotton twill. 175 g/m²
 Embroidered eyelets for ventilation
 Fabric hook and loop fastener
 Structured front panels
 Cotton inside details
 Head circumference: 58 cm.

					
38675010	38675100	38675210	38675250	38675330	38675400
					
38675440	38675490	38675690	38675890	38675990	



bullet®



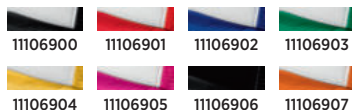
| TRUCKER 111069

5 panel cap

100% Polyester with a front panel made from foam, plastic mesh at the back. 100-105 g/m²

Plastic closure

Head circumference: 58 cm.



bullet®

| SAN DIEGO 111012

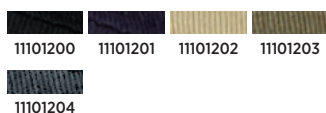
cap

100% Cotton twill. 190-195 g/m²

Metal eyelets

Fabric hook and loop fastener

Head circumference: 58 cm.



bullet®

| BASEBALL 38658

5 panel cap

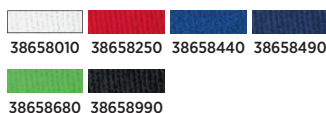
100% Cotton twill. 155-160 g/m²

Flat visor

Embroidered eyelets for ventilation

Fabric hook and loop fastener

Head circumference: 58 cm.



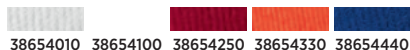
bullet®

| BRYSON 38654**6 panel cap**100% Heavy twill brushed Cotton. 275-280 g/m²

Embroidered eyelets for ventilation

Fabric hook and loop fastener

Head circumference: 58 cm.



38654010 38654100 38654250 38654330 38654440



38654490 38654680 38654920 38654990

**| BRENT** 38656**6 panel sandwich cap**100% Heavy twill brushed Cotton. 275-280 g/m²

Pre-curved visor with sandwich

Embroidered eyelets in contrast

colour for ventilation

Fabric hook and loop fastener

Head circumference: 58 cm.



38656230 38656250 38656330 38656400 38656440



38656490 38656700 38656920 38656990

**| CHALLENGE** 111002**6 panel sandwich cap**100% Heavy twill brushed Cotton. 275-280 g/m²

Pre-curved visor with sandwich

Embroidered eyelets for ventilation

Metal buckle closure

Head circumference: 58 cm.



11100200 11100201 11100202 11100203 19548850



19548851 19548852 19548853 19548854 19548855



I QUALIFIER 111011

6 panel mesh cap

100% Polyester. 130 g/m²

Fabric hook and loop fastener with metal ring

Head circumference: 58 cm.



I MOMENTUM 111052

6 panel cool fit sandwich cap

100% Polyester wicking mesh with wicking finish.

120 g/m²

Pre-curved visor with sandwich

Side panels in mesh fabric

Fabric hook and loop fastener with rubber logo tab

Head circumference: 58 cm.



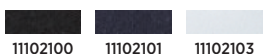
I ALLEY 111021

6 panel cool fit sandwich cap

100% Polyester. 104 g/m²

Fabric hook and loop fastener with metal ring

Head circumference: 58 cm.





| LUCINA 38659

beanie with LED light

Rib knit of 100% Acrylic.

Continuous LED lighting system



38659990



bullet®

| ELENA 38660

6 panel cap with LED light

100% Cotton twill. 180 g/m²

Continuous LED lighting system

Fabric hook and loop fastener

Head circumference: 58 cm.



38660990



bullet®

| MIGHTY 38661

LED knit beanie

100% Acrylic 1x1 rib knit, 12 gauge.

Double layered beanie

Turn back cuff

Crown darts for shaped fit

Removable & rechargeable headlight



38661990



ELEVATE



I TRILBY



38663

hat

100% Polyester. Trilby Style Polyester Hat. Inner head size circumference 'one size fits all' 58 cm. Hat can be branded with a (decorated) ribbon made of non-woven 100 g/m² Polypropylene.



38663010 38663250 38663330 38663440 38663990

bullet®

38664

ribbon

Non woven 100 g/m² Polypropylene.



38664010 38664250 38664330 38664440 38664990

bullet®





| IRWIN 111043

beanie

1x1 Rib knit of 100% Acrylic.
Single layer beanie with double folded edge



11104300 11104301 11104302 19548700 19548701



| COLUMBUS 111060

scarf

1x1 Rib knit of 100% Acrylic.
Single layer scarf



11106000 11106003



BOREAS 38676

**SUPERHEROES!
2 DAY BRANDING**

NEW **bullet**

beanie with patch

1x1 Rib knit of 100% Acrylic.

Patch of 100% Polyester.

Single layer beanie with double folded edge

Patch for branding

			
38676010	38676100	38676210	38676250
			
38676330	38676400	38676440	38676490
			
38676680	38676690	38676890	38676990













| LEVEL 111053

beanie

1x1 Rib Knit of 100% Acrylic.
Double layered beanie
Branded loop label

			
11105300	11105301	11105302	11105303
			
11105304	11105305	11105306	11105307



| ELEVATE

| MARK 111054

scarf

1x1 Rib knit of 100% Acrylic.
Double layered scarf
Tubular knit
Branded loop label

			
11105400	11105401	11105402	11105403
			
11105404	11105405	11105406	11105407





| CALIBER 111055

beanie

Fleece of 100% Polyester, 2 sides brushed, 2 sides anti-pilling. 260 g/m²
Branded loop label



| REDWOOD 111056

scarf

Fleece of 100% Polyester, 2 sides brushed, 2 sides anti-pilling. 260 g/m²



ICON INDEX



Hood that can be removed.

DETACHABLE HOOD



WEBTECH™

Moisture management is achieved at the Yarn stage, where the microfine yarns create a capillary action to channel sweat away.



WICKING

Unique yarns or fabric finishes that transport moisture to the outer surface.



FOLD AWAY HOOD

Integrated hood that can be folded and stowed away in the collar.



THERMALTECH

Stay warm and feel comfortable with a breathable insulated membrane, and resistance barrier to extreme elements.



SEAM SEALED

Seam sealed: Permanently covering the inner seams with waterproof tape for long lasting waterproof protection.



PRE-SHRUNK

Fabric or garment has been treated during manufacturing to minimize shrinkage during washing.



SNAG RESIST

Fabric is engineered to prevent snagging.



WATER REPELLENT

Fabric surface is treated to repel water.



EASY CARE

A special finish used on fabrics that resists a wrinkled appearance after washing many times.



BREATHABLE

Products allow moisture to escape from the body.



SHIELDTECH

Protect yourself from wind and rain. This technology offers complete comfort in a variety of conditions.



YKK ZIPPERS

YKK® zipper used in the garment. YKK® is the world's leading zipper brand and represents high quality.



WATERPROOF

Products made of waterproof materials to keep moisture out.



STRETCH

Fabric content provides stretch allowing for a more comfortable fit.



REGULAR FIT

Not too loose. Classic cut that follows the shape of the body with ease of movement.



WINDPROOF

The product's ability to block cold air flow from permeating the fabric.



WATER RESISTANT

Fabric finishes are used to resist moisture penetration.



RELAXED FIT

Generous cut with added ease allowing for loose comfort.



UV PROTECT
UPF 15-39

Product provides protection from UV rays. UPF value represents the fractional amount of sun's harmful UV rays that pass through a fabric.



WIND RESISTANT

Product helps prevent wind from penetrating.



TAILORED FIT

More fitted waistline and an overall tighter fit, which accentuates the body shape.



CARETECH

The skilful blending of natural and man-made yarns results in fabrics that have easy care properties.



DECORATION ACCESS

Inside opening for easy decoration access.



GLOBAL FIT

Slightly looser than the regular fit for added comfort.



ANTI-MICROBIAL

Unique finish that controls bacteria growth, prevents odours and maintains garment freshness.



ANTI-PILL

A treatment applied to fabric that resists the formation of little balls or pills on the surface of the fabric.



COMMERCIAL LAUNDRY

This product meets the standard of Industrial Laundry ISO 15797.



3 LAYER BONDED

3 Layer bonded: Three materials of differing characteristics, are joined together, creating a composite fabric with superior performance.



HOODED

Integrated hood.



INTERIOR CUSTOM BRANDING

Product engineered for custom interior branding.

SIZING CHART



This sizing chart is intended to be a guide only for our different fits.
While we do our best to ensure all our sizing is consistent, you may find that some styles vary in size.

REGULAR FIT
to fit body measurements

♂							
Regular fit	XS	S	M	L	XL	XXL	XXXL
Chest	86-91	92-97	98-103	104-109	110-115	116-121	122-127
Hip	84-89	90-95	96-101	102-107	108-113	114-119	120-125
♀							
Regular fit	XS	S	M	L	XL	XXL	
Chest	75-80	81-86	87-92	93-98	99-104	105-110	
Hip	75-80	81-86	87-92	93-98	99-104	105-110	
👤	104	116	128	140	152		
Chest	51-57	58-65	66-73	74-81	82-89		
Hip	51-57	58-65	66-73	74-81	82-89		

GLOBAL FIT - BASE LAYER
to fit body measurements

♂						
Global fit	XS	S	M	L	XL	XXL
Chest	86-91	92-98	99-107	108-115	116-122	123-129
Hip	84-89	90-96	97-105	106-113	114-120	121-127
♀						
Global fit	XS	S	M	L	XL	
Chest	75-81	82-89	90-97	98-105	106-112	
Hip	81-86	87-93	94-101	102-108	109-115	

GLOBAL FIT - OUTER LAYER
to fit body measurements

♂						
Global fit	XS	S	M	L	XL	XXL
Chest	86-91	92-97	98-105	106-113	114-121	122-127
Hip	84-89	90-95	96-103	104-111	112-119	120-125
♀						
Global fit	XS	S	M	L	XL	
Chest	75-79	80-86	87-94	95-102	103-110	
Hip	81-86	87-92	93-98	99-104	105-110	

SIZING CHART



This sizing chart is intended to be a guide only for our different fits. While we do our best to ensure all our sizing is consistent, you may find that some styles vary in size.

REGULAR FIT
to fit body measurements

♂							
Regular fit	XS	S	M	L	XL	XXL	XXXL
Chest	83-88	89-94	95-100	101-106	107-112	113-118	119-124
Hip	81-86	87-92	93-98	99-104	105-110	111-116	117-122
♀							
Regular fit	XS	S	M	L	XL	XXL	
Chest	72-77	78-83	84-89	90-95	96-101	102-107	
Hip	72-77	78-83	84-89	90-95	96-101	102-107	

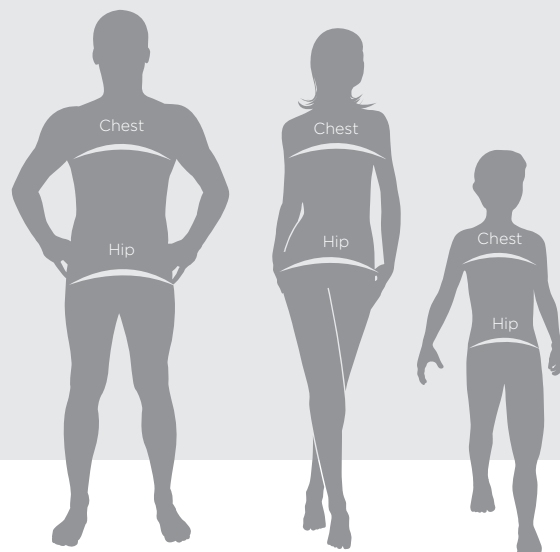
GLOBAL FIT
to fit body measurements

♂							
Global fit	XS	S	M	L	XL	XXL	XXXL
Chest	89-94	95-100	101-106	107-112	113-118	119-124	125-130
Hip	87-92	93-98	99-104	105-110	111-116	117-122	123-128
♀							
Global fit	XS	S	M	L	XL	XXL	
Chest	75-80	81-86	87-92	93-98	99-104	105-110	
Hip	78-83	84-89	90-95	96-101	102-107	108-113	

The sizing charts reference body measurements. If you require garment measurements, please contact customer service.

Chest
Under the arms and across the shoulder blades with a firm and level tape.

Hip
When standing, measure around the widest part of the hip.



S U P E R H E R O E S !



3802801 HEROS 2XS-5XL
38666010 FENIKS



3802810 HEROS 2XS-3XL
38666100 FENIKS



3802833 HEROS 2XS-3XL
38666210 FENIKS



3802825 HEROS 2XS-5XL
38666250 FENIKS



3802821 HEROS 2XS-3XL
38666210 FENIKS



3802868 HEROS 2XS-3XL
38666680 FENIKS



3802869 HEROS 2XS-3XL
38666690 FENIKS



3802840 HEROS 2XS-3XL
38666400 FENIKS



3802844 HEROS 2XS-3XL
38666440 FENIKS



3802849 HEROS 2XS-5XL
38666490 FENIKS



3802889 HEROS 2XS-3XL
38666890 FENIKS



3802899 HEROS 2XS-5XL
38666990 FENIKS

YOUR FINISHING TOUCH

Custom decoration is a great way to reinforce your brand identity. Especially if, as shown throughout this catalogue, you apply it to multiple items. A wide choice of quality techniques, including the impressive new textile method HXD, means you can get both the look you want and the quality you need.

Whether you prefer cool and subtle, distinctively stylish or to boldly grab attention, you can rely on us for expert service. Feel free to ask us for advice and inspiration.

HXD



Unique decoration method • Add dimension to a logo • Perceived value of Embroidery combined with colour range and detail of True Edge Transfer • Durable • Available for a wide range of garments • Max print area: 100 x 75 mm

LASER ENGRAVING



Create a high-class impression • Unique tone on tone • Best on mid-range colours • Unlimited washability

PADPRINT



Great all round cost effective solution • Can be applied on virtually any shape • Suitable for any surface texture, including soft products like stress balls • Perfect for multi coloured logos • Fast and economical

DIGITAL PRINTING



Perfect for multi coloured logos • Create a unique effect with matt, gloss or embossed finishes • Strong resistance to fading or damage • Ideal for small quantities • Can only be applied to flat or slightly curved surfaces

DEBOSSING



Striking 3D appearance • Subtle tone on tone look • Great for real and imitation leather products • Ideal for waterproof fabrics • Unlimited washability

DOMING



Create a 3D effect • Strong resistance to fading or damage • Can only be applied to flat surfaces

EMBROIDERY



Classic decoration technique • Suitable for both flat and irregular surfaces • Tread colours to match any logo • Up to 12 colours per embroidery • Perfect for left/right chest and left/right bicep

INFUSION



Create an untouchable decoration with razor sharp detail • Offers a comfortable, breathable decoration • Offers unlimited colours for one set up

TRANSFER



Ideal for fabrics • Perfect for logos with many colours • Allows for extreme detail like small text • Economical solution for multi colour printing or smaller quantities • Maintains integrity of waterproof fabrics

SUBLIMATION



Premium full colour photorealistic prints • Suitable for polyester fabrics (minimum 60% polyester) and polymer coated products • Soft, flexible imprint that can even be applied over seams and zips • Decoration is resistant to fading and cracking • Only suitable for white products

SCREENROUND



Long lasting results • Apply sharp, high quality decoration on curved products • Economic choice for large quantities • Multi colour decoration available on a selection of pens • Ideal for text

HOTSTAMPING



Exceptional superior impression • Ideal for real and imitation leather product • Available in silver and gold finish

SCREENPRINT



Long lasting results • Good cost effective solution for larger quantities • Allows single and multi colour decorations • Great choice for a distressed look and feel • Can only be applied to flat surfaces

DIGITAL STICKER



Excellent print quality and details • Regularity of sticker shapes • 50cm2 max size • 4 days lead time from e-proof approval

ENJOY 2020 APPEREL

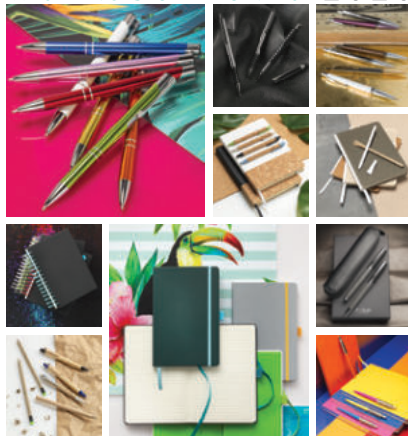
ENJOY BAGS 2020



ENJOY DRINKWARE 2020



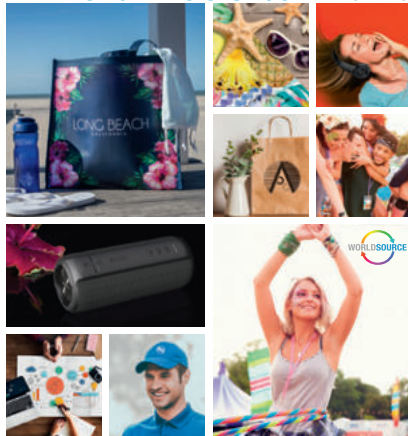
ENJOY WRITING & STATIONERY 2020



ENJOY APPAREL 2020



ENJOY WORLD SOURCE 2020



ENJOY THE PFM COLLECTION 2020

